



2024. M81A

2024L562A1EL

Coimisiún na Scrúduithe Stáit
State Examinations Commission

Leaving Certificate Examination, 2024

Design & Communication Graphics
Higher Level

Section A (60 marks)

Thursday, 20 June
Morning, 9:30 - 12:30

Centre No.

This examination has three sections:

Section A	Core - Short Questions
Section B	Core - Long Questions
Section C	Applied Graphics - Long Questions

Section A

- Four questions are presented.
- Answer **any three** questions on the A3 sheet overleaf.
- All questions in Section A carry **20 marks** each.

General Instructions:

- Construction lines must be shown on all solutions.
- Write the question number distinctly on the answer paper in Sections B and C.
- Work on one side of the drawing paper only.
- All dimensions are given in metres or millimetres.
- Write your Examination number in the box below and on all other sheets used.

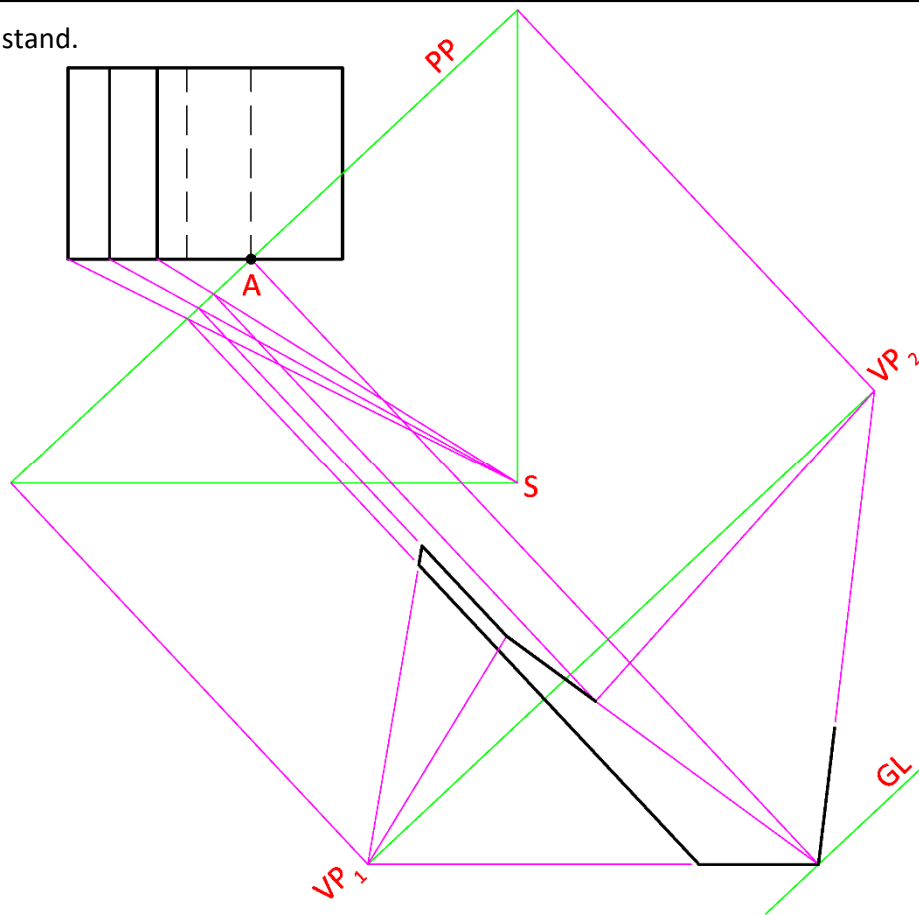
Examination Number

Section A - Core - Answer any three of the questions on this A3 sheet.

A-1. The image below shows a Lotto play stand.

The drawing on the right shows the plan and partially completed perspective view of a similar stand. The picture plane passes through corner **A** on the base of the stand.

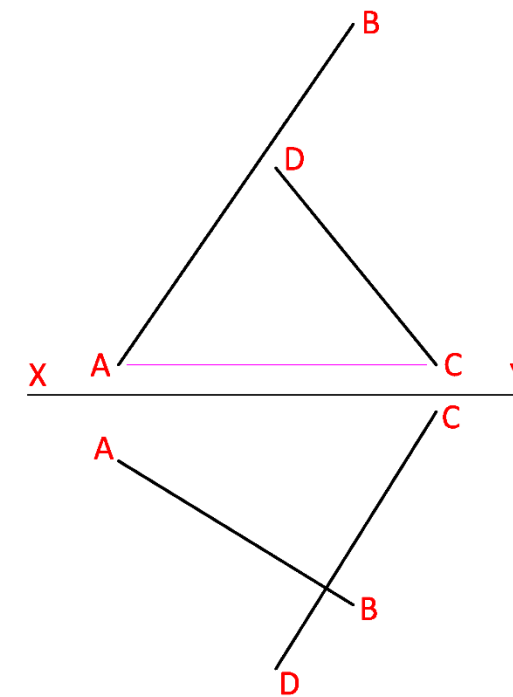
- (a) Complete the perspective drawing of the stand.
- (b) Determine and indicate the overall height of the stand.



A-3. The image below shows two lightsabers from the Star Wars movie series.

The lightsabers are represented by the two skew lines **AB** and **CD** on the right.

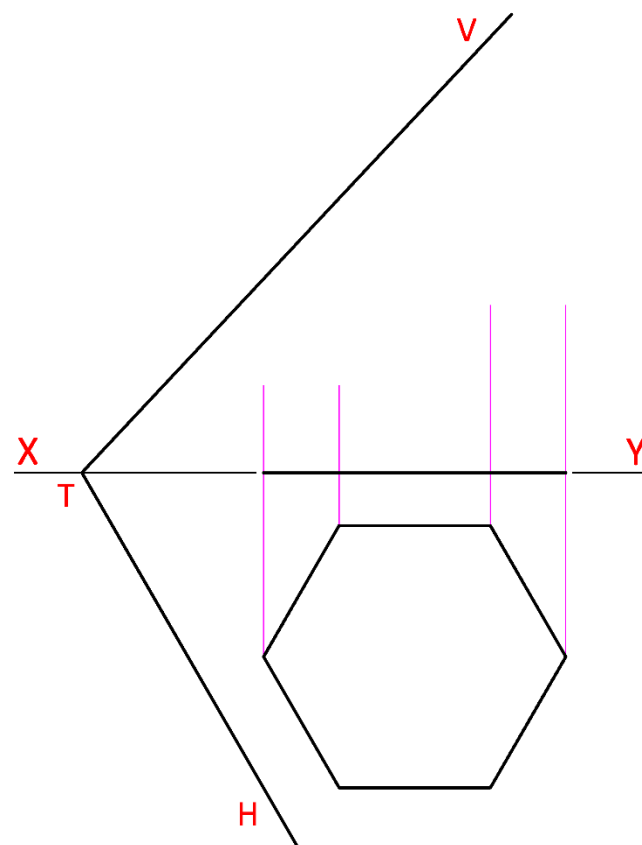
- (a) Determine the projections of the shortest horizontal line between the skew lines.
- (b) Determine and indicate the true length between the points **A** and **C**.



A-2. The image below shows a ring display stand.

The drawing on the right shows the plan and incomplete elevation of the display stand. The top surface of the stand is contained on the oblique plane **VTH**.

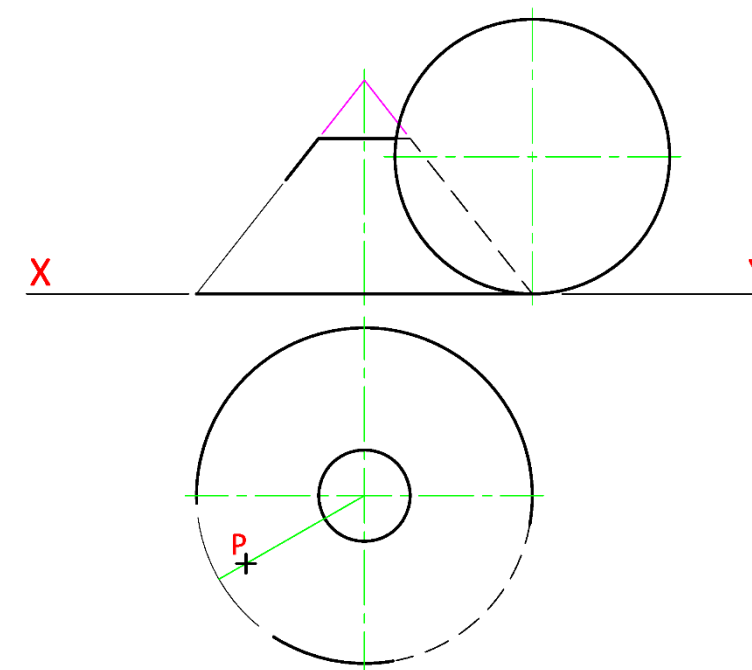
- (a) Complete the elevation of the display stand, including all hidden detail.
- (b) Determine and indicate the angle of inclination of the top surface of the display stand to the horizontal plane.

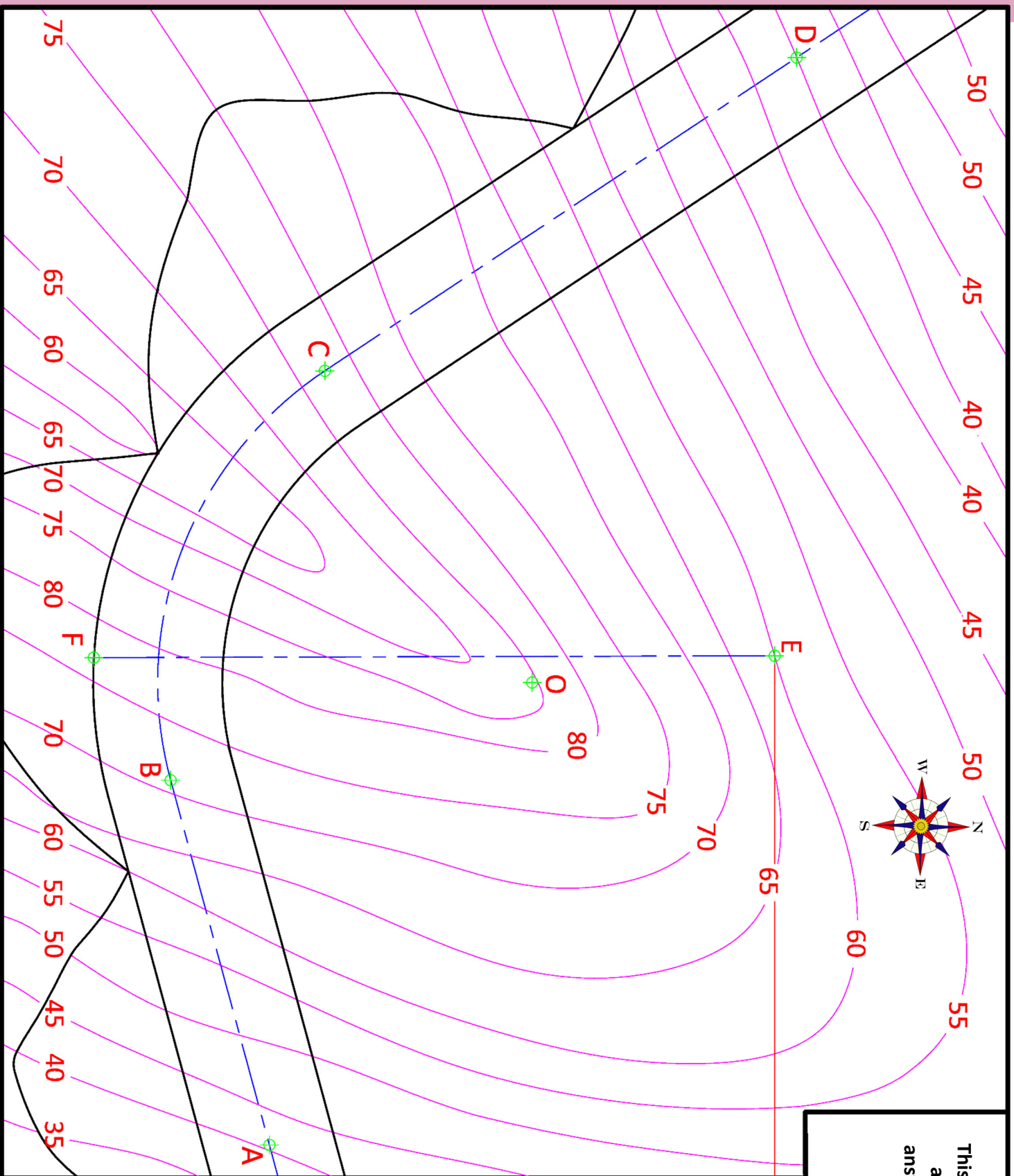


A-4. The image below shows a sports cone and a football.

The drawing on the right shows the elevation and incomplete plan of a similar sports cone and football in contact with each other.

- (a) Complete the plan of the solids in contact.
- (b) Draw the plan and elevation of another sphere, which shall be in contact with the cone at point **P** and rest on the horizontal plane.





This Contour Map is part of Section C and should only be used for the answering of the Geologic Geometry Option (Question C-1).

(Scale 1:1000)

