

AN ROINN OIDEACHAIS
(Department of Education).

LEAVING CERTIFICATE EXAMINATION, 1944.

MECHANICAL DRAWING AND DESIGN.

Course B.—Honours.

BOYS AND GIRLS.

WEDNESDAY, 21st JUNE.—MORNING, 10 TO 12 NOON.

BOYS ONLY.

NOTE.—The use of mathematical instruments, protractors, scales, T- and set squares, and drawing-boards is allowed.

The number of the question must be distinctly marked by the side of each answer. Both sides of the paper may be used.

Questions marked (*) have accompanying diagrams.

Only THREE questions to be attempted, of which not more than two are to be taken from SECTION A, or SECTION B.

All questions carry equal marks.

SECTION A.

(The questions in this Section must be solved accurately with the aid of drawing instruments. All lines used in constructions should be clearly shown.)

*Q. 1. An outline dimensioned diagram of a Telephone is given. Draw the diagram full-size to the dimensions indicated.

*Q. 2. The diagram gives the plan and elevation of a Bicycle. Draw full-size, a new elevation on X' Y'.

*Q. 3. The diagram represents a Door-knocker. Draw the diagram full-size to the dimensions given.

*Q. 4. Copy the Moresque ornament shown on the diagram full-size according to the dimensions indicated.

SECTION B.

*Q. 5. Draw a design suitable for the cover of a Case, or Compendium for Stationery. The design is to occupy a rectangle 7 inches by 5 inches (vertical), and must be based on the plant (Blackberry), illustrated on the diagram.

(Colour MAY be used in answering this question.)

Q. 6. Draw a design for a Strip-poster to advertise "Jam". The design is to occupy a rectangle 8 inches by 3 inches (horizontal).

Simple "One-stroke" lettering may be used to indicate the title or announcement.

(Colour MAY be used in answering this question.)

Q. 7. Draw a design for an ornamental Clock-case in the form of a regular octagon of 3 inches side, and having a circular hole of 3 inches diameter, pierced through its centre.

Any style of ornament may be selected, and the design is to be suitable for Leathercraft, Repoussé Metal, Enamelling, Inlay, Woodcarving, or Stained Wood.

(Colour MAY be used in answering this question.)

Q. 8. Draw a design for an "All-over" pattern based on a diamond shape, the diagonals of which are 4 inches, and $2\frac{1}{2}$ inches, respectively.

One repeat should be completed in two colours or in black and white, and the main lines of the adjacent repeats should be indicated, to show the continuity of the pattern. Any style of ornament may be used.

GIRLS ONLY.

NOTE.—The use of mathematical instruments, protractors, scales, T- and set squares, and drawing-boards is allowed.

The number of the question must be distinctly marked by the side of each answer. Both sides of the paper may be used.

Questions marked (*) have accompanying diagrams.

Only THREE questions to be attempted, of which not more than two are to be taken from SECTION A, or SECTION B.

All questions carry equal marks.

SECTION A.

(The questions in this Section must be solved accurately with the aid of drawing instruments. All lines used in constructions should be clearly shown.)

*Q. 1. Draw with instruments the geometrical basis on which the given repeating border pattern is constructed.

It will be sufficient to complete *half* the diagram.

*Q. 2. Copy the Moresque ornament shown on the diagram, full-size to the dimensions indicated.

*Q. 3. The diagram represents an ornamental Initial-letter. Draw the diagram full-size to the dimensions given.

*Q. 4. An outline dimensioned diagram of a panel for embroidery is shown. Draw the diagram full-size according to the given dimensions.

SECTION B.

*Q. 5. Draw a design suitable for the cover of a Case, or Compendium for Stationery. The design is to occupy a rectangle 7 inches by 5 inches (vertical), and must be based on the plant (Blackberry), illustrated on the diagram.

(Colour MAY be used in answering this question.)

Q. 6. Draw a design for a Strip-poster to advertise "Jam". The design is to occupy a rectangle 8 inches by 3 inches (horizontal).

Simple "One-stroke" lettering may be used to indicate the title or announcement.

(Colour MAY be used in answering this question.)

Q. 7. Draw a design for an ornamental Clock-case in the form of a regular octagon of 3 inches side, and having a circular hole of 3 inches diameter pierced through its centre.

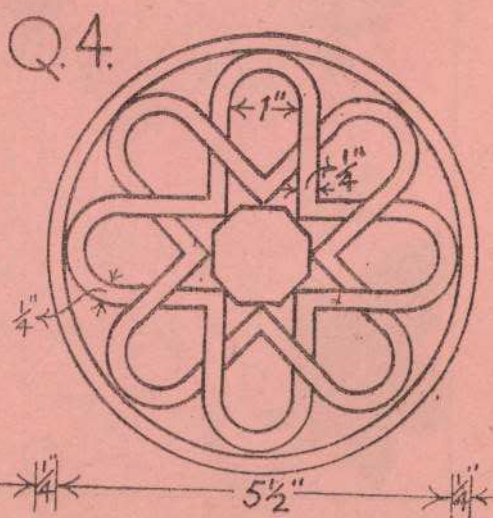
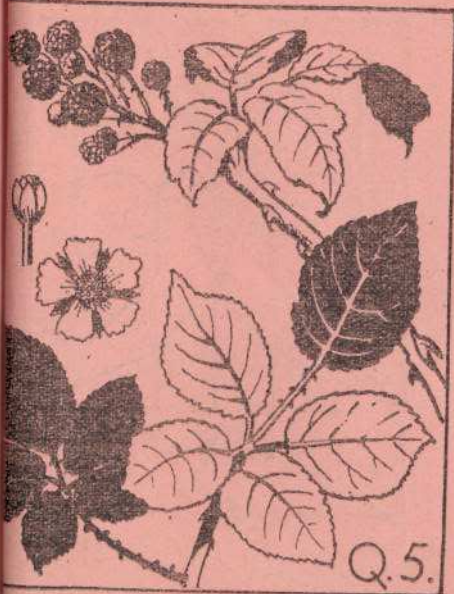
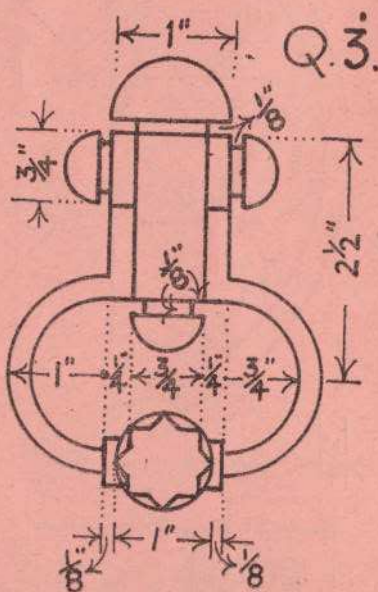
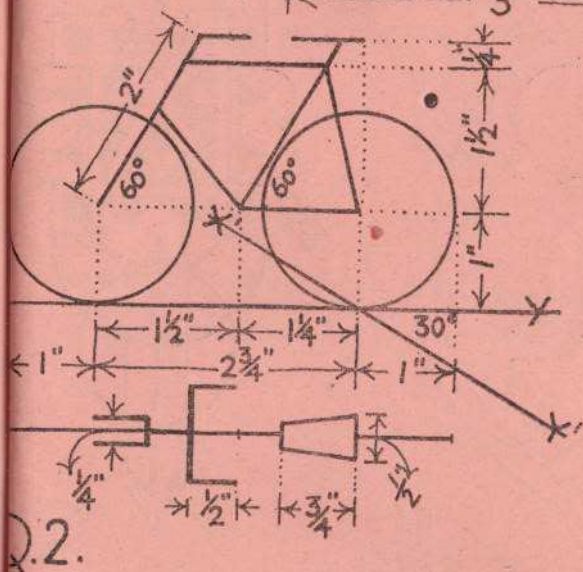
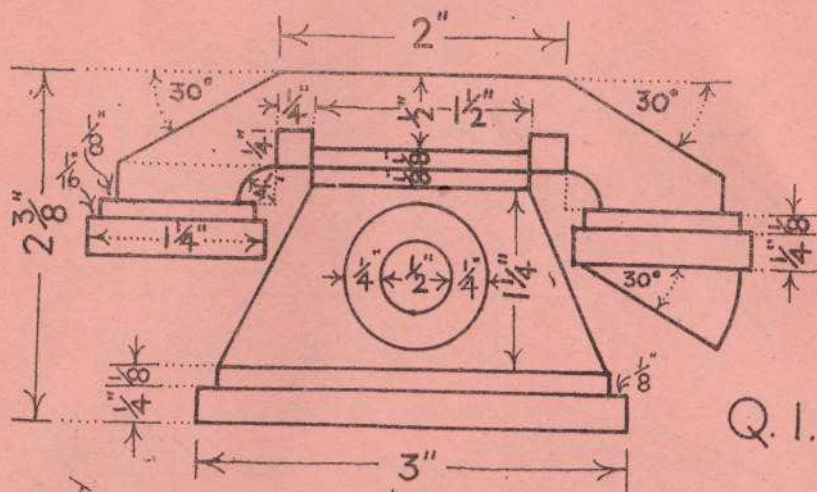
Any style of ornament may be selected, and the design is to be suitable for Leathercraft, Repoussé Metal, Enamelling, Inlay, Woodcarving, or Stained-wood.

(Colour MAY be used in answering this question.)

Q. 8. Draw a design for an "All-over" pattern based on a diamond shape, the diagonals of which are 4 inches, and $2\frac{1}{2}$ inches, respectively.

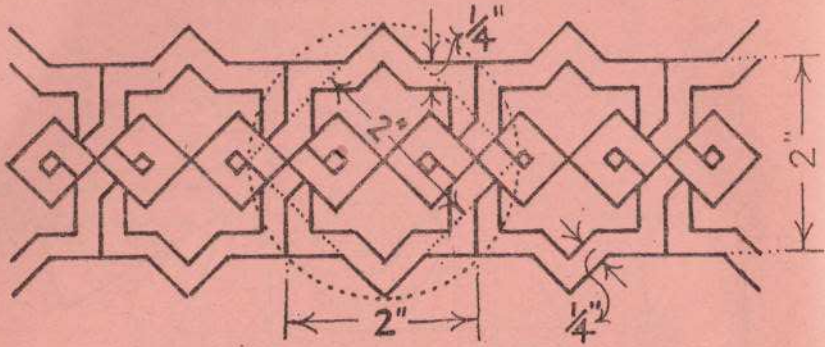
One repeat should be completed in two colours or in black and white, and the main lines of the adjacent repeats should be indicated, to show the continuity of the pattern. Any style of ornament may be used.

ΣΑΡΣΥΙΝ ΔΙΜΑΙΝ - BOYS ONLY

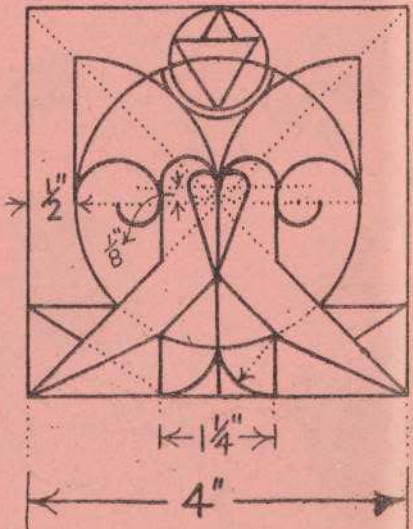
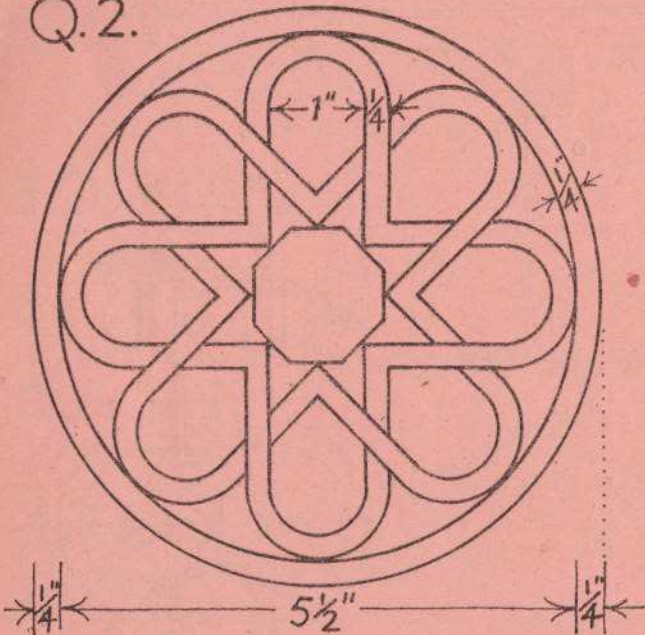


ΞΕΔΡΡΑΙΛΙ ΔΑΜΑΙΝ - GIRLS ONLY

Q.1.



Q.2.



Q.4