

AN ROINN OIDEACHAIS
INTERMEDIATE CERTIFICATE EXAMINATION, 1985

M.115

MECHANICAL DRAWING

WEDNESDAY, 19 JUNE - AFTERNOON, 2.00 to 5.00

400 marks

INSTRUCTIONS

- (a) Five questions to be answered; one of these must be question No. 1, Section A. Two must be selected from Section B and two must be selected from Section C.
 - (b) All questions carry equal marks.
 - (c) The number of the question must be distinctly marked by the side of each question.
 - (d) Work on one side of the paper only.
 - (e) Examination number must be distinctly marked on each sheet of paper used.
 - (f) All construction lines must be clearly shown.
 - (g) All measurements are in millimetres.
-

SECTION A

(This question must be attempted.)

1. A shaped solid is shown in Fig. 1. Make a full-size drawing of this solid in orthographic projection showing:-

- (a) An elevation looking in the direction of arrow A.
- (b) An end elevation looking in the direction of arrow B.
- (c) A plan projected from (a) above.

FIRST or THIRD angle projection may be used.

SECTION B

(Two questions to be attempted from this section)

2. Fig. 2 shows the plan of a regular pentagonal prism which is cut by a plane. The cross-section of the prism is also given.

Reproduce the given plan full-size and project the elevation of the cut prism.

3. The elevation and end view of a solid are shown in fig. 3.

- (a) Reproduce these views full size and draw the plan in the position indicated on the given drawings.
- (b) From the plan project a new elevation looking in the direction of the arrow.

4. Fig. 4 shows the elevation and plan of a solid.

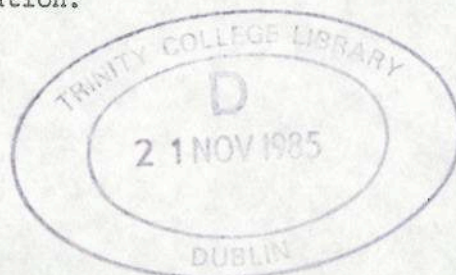
- (a) Draw a full-size isometric view of this solid.

or

- (b) Using the isometric grid-paper provided draw a neat well-proportioned FREEHAND sketch of this solid. All measurements should be inserted on the freehand drawing.

5. Fig. 5 shows the plan of a cylinder A and sphere B resting on the Horizontal Plane. The height of the cylinder is 60 mm.

- (a) Draw the given plan and project the elevation of these two solids.
- (b) A cone, base diameter 60 mm and altitude 70 mm, stands on the Horizontal Plane in position C so that it is in contact with both cylinder and sphere. Draw this cone in the plan and elevation.



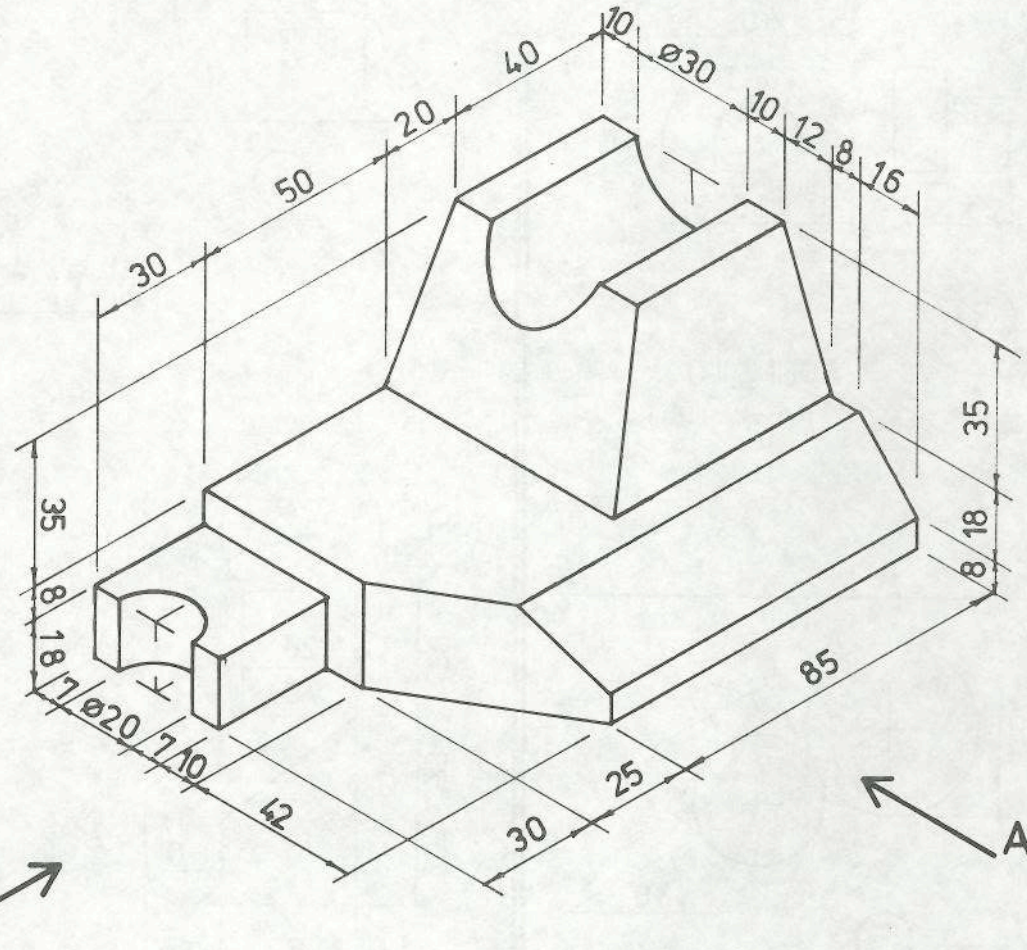
OVER→

SECTION C

(Two questions to be attempted from this section)

6. The triangle ABC shown in fig. 6 has a perimeter of 280 mm and its sides are in the ratio of 4:5:6.
- Draw this triangle by using a geometric construction and inscribe the square as shown.
 - Construct a square which shall have an area equal to the sum of the three shaded triangles.
7. In the design shown in fig. 7 the part on the right-hand side of line A-A is similar to the dimensioned part on the left-hand side.
Draw this design to the given dimensions.
8. (a) Draw the shape shown in fig. 8 to the given dimensions.
This shape is to be rotated in a clock-wise direction about centre O through an angle of 120° . Draw the shape in its new position.
- (b) On a line 100 mm long construct a diagonal scale of 1:50 which will read up to 5m in metres and hundredths of metres. Show measurements of 2580 mm and 3240 mm on the scale.
9. (a) The design shown in fig. 9 contains an elliptical curve and two tangents drawn to the curve at P and Q. The major and minor axes of the ellipse are 110 mm and 70 mm, respectively.
Draw this design.
- (b) A line AB 110 mm long represents the major axis of an ellipse. A point P on the curve of the ellipse is 90 mm from A and 45 mm from B.
Find the minor axis and the focal points of the ellipse.

ROINN A ——— SECTION A

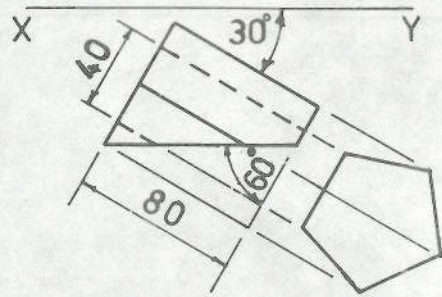


①

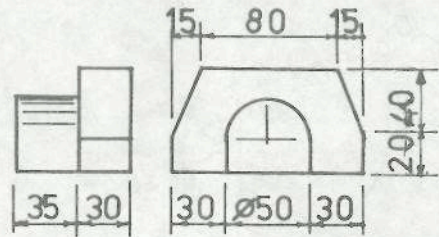


22742

ROINN B — SECTION B

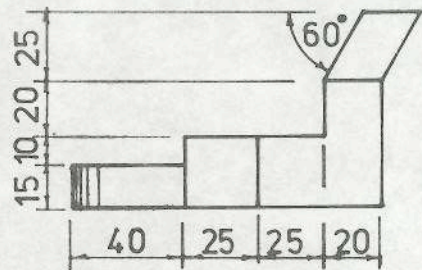


②

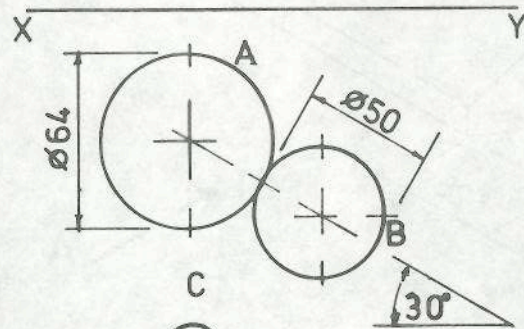


③

PLAN
BONNHLÓ

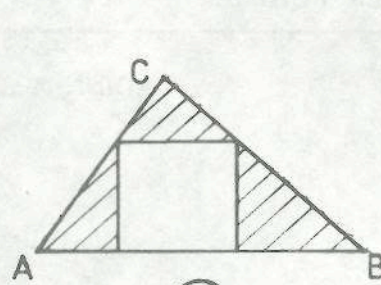


④

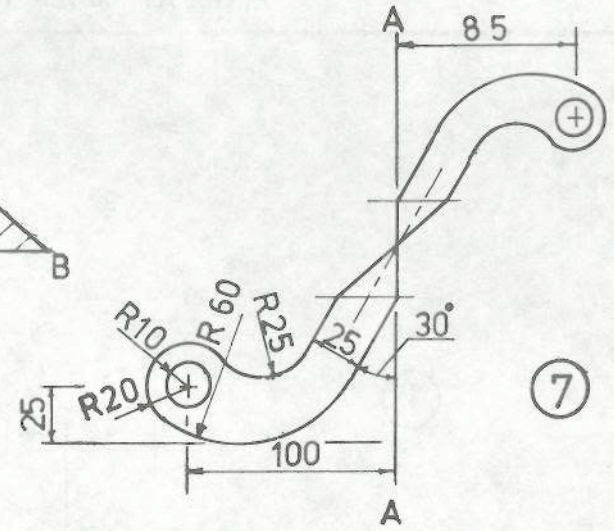


⑤

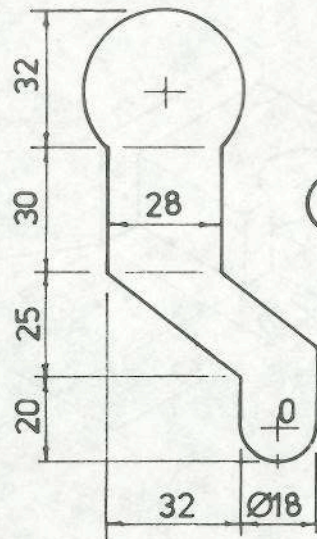
ROINN C — SECTION C



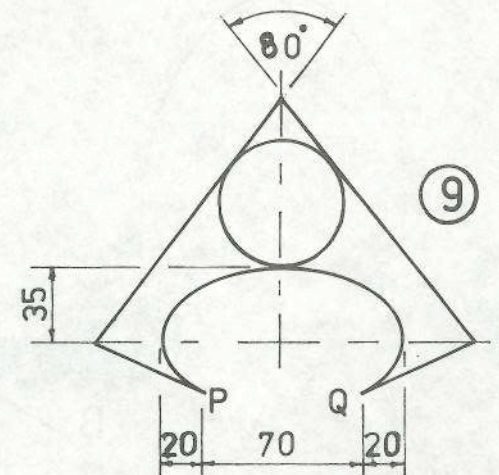
⑥



⑦



⑧



⑨