

AN ROINN OIDEACHAIS  
(Department of Education).

BRAINSE AN MHEÁN-OIDEACHAIS  
(Secondary Education Branch).

LEAVING CERTIFICATE EXAMINATION, 1929.

PASS.

MECHANICAL DRAWING AND DESIGN.  
BOYS AND GIRLS.

WEDNESDAY, 19th JUNE.—AFTERNOON, 4 to 6 P.M.

BOYS ONLY.

NOTE.—The use of mathematical instruments, protractors, scales, T- and set squares, and drawing-boards is allowed.

All construction lines must be clearly shown.

The number of the question must be distinctly marked by the side of each answer. Both sides of the paper may be used.

Questions marked (\*) have accompanying diagrams.

The number of marks assigned to each question is stated in brackets after the question.

Q. 1. Within a rectangle 4 inches by  $1\frac{1}{2}$  inches, draw with pencil, pen or brush in letters proportionate to the space the word **TRADE** in Roman letters.

Or :—

The word **ceárd** in Gaelic letters. [10]

\*Q. 2. Draw the given fan-light grille to the dimensions indicated. [12]

\*Q. 3. The diagram gives the plan and elevation of a hexagonal nut. Draw (full size) a new elevation on  $X^1Y^1$ . [16]

\*Q. 4. The plan and elevation are given of a street lamp. Draw a new elevation on  $X^1Y^1$ .

Scale  $\frac{3}{4}$  inch to 1 foot. [16]

\*Q. 5. The figure represents the elevation of a cottage. Draw a new elevation so that the total length of your drawing comes 3 inches.

Construct the scale for use in making the drawing. The scale is to be correctly divided and figured. [14]

Q. 6. Draw a design to occupy a regular octagon of two inches side.

The design may be based on Celtic ornament, or composed entirely of geometric forms or of geometric and free-drawn forms combined, or of natural forms ornamentally treated.

State the material and process for which your design is suited. [32]

Or :—

Make a design for a finger-plate for a door. The design to occupy a rectangle  $8\frac{1}{2}$  inches by 3 inches.

State the material for which your design is suited. [32]

### GIRLS ONLY.

**NOTE.**—The use of mathematical instruments, protractors, scales, T- and set squares, and drawing-boards is allowed.

All construction lines must be clearly shown.

The number of the question must be distinctly marked by the side of each answer. Both sides of the paper may be used.

Questions marked (\*) have accompanying diagrams.

The number of marks assigned to each question is stated in brackets after the question.

Q. 1. Within a rectangle 4 inches by  $1\frac{1}{2}$  inches, draw with pencil, pen or brush in letters proportionate to the space the word **TRADE** in Roman letters.

*Or :—*

The word **ceÁrú** in Gaelic letters.

[10]

\*Q. 2. Draw the figure shown, using the figured dimensions.

[12]

\*Q. 3. Copy the pattern to the dimensions indicated.

[12]

\*Q. 4. Draw to the dimensions shown, the portion of the given diaper pattern enclosed by E.F.H.G.

[14]

\*Q. 5. The plan and elevation are given of a three fold screen. Draw the plan and elevation to a scale of  $\frac{3}{4}$  inch to 1 foot, and show the panelling of A on the fold B or C in elevation.

[20]

Q. 6. Draw a design to occupy a regular octagon of two inch side.

The design may be based on Celtic ornament, or composed entirely of geometric forms or of geometric and free-drawn forms combined, or of natural forms ornamentally treated.

State the material and process for which your design is suited.

[32]

*Or :—*

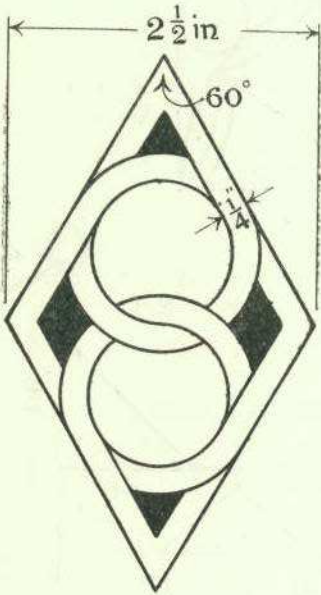
Make a design for a long cushion cover 2 feet by 1 foot. The design should be suitable for embroidery, embossed leather or stencilling and may include an initial letter or monogram.

Scale  $\frac{1}{2}$  full size.

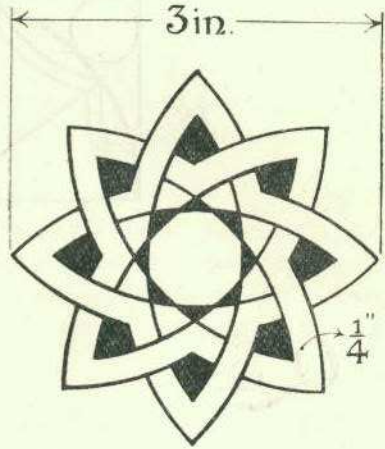
[32]

GIRLS ONLY.

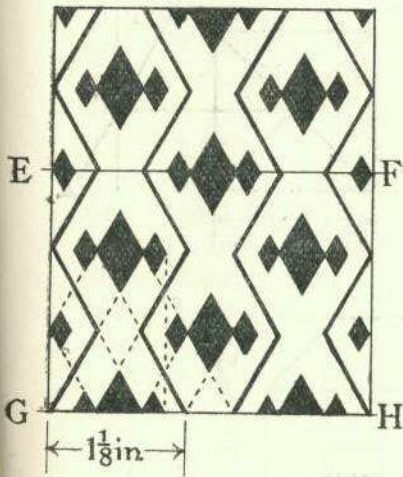
Q2.



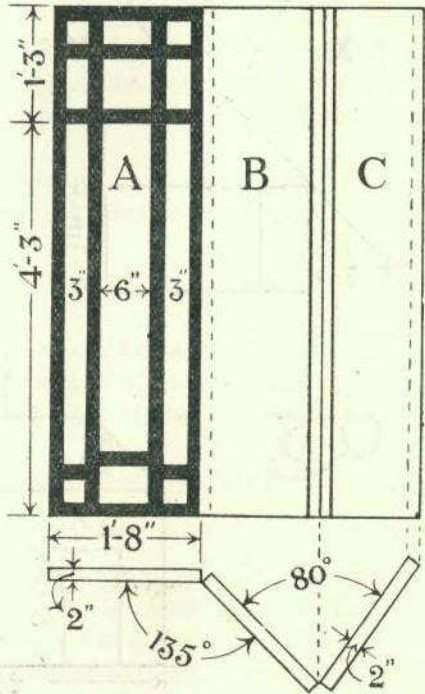
Q3.



Q4.

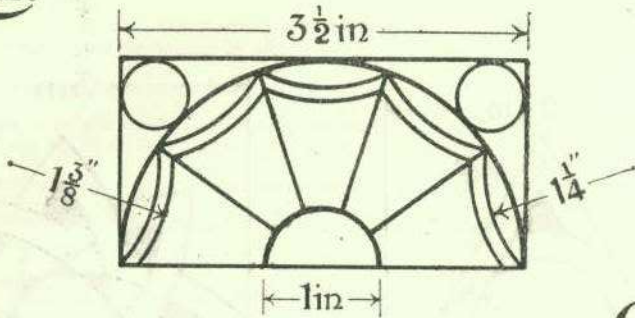


Q5.

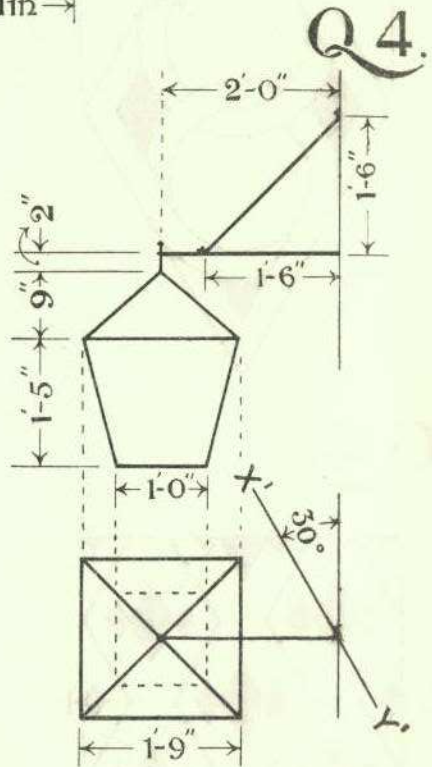
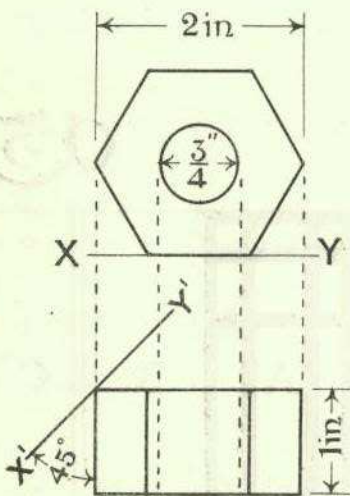


BOYS ONLY.

Q2.



Q3.



Q5.

