

AN ROINN OIDEACHAIS

(Department of Education.)

INTERMEDIATE CERTIFICATE EXAMINATION, 1946.

MECHANICAL DRAWING AND DESIGN. (COURSE A.)

FRIDAY, 21st JUNE.—MORNING, 10 TO 12 NOON.

INSTRUCTIONS.

- (a) The use of drawing instruments is allowed.
- (b) The number of the question must be distinctly marked by the side of the answer.
- (c) The same number of marks is allotted to each question.
- (d) Colour MUST be used.
- (e) Questions marked (*) have accompanying diagrams.

ONE QUESTION ONLY TO BE ATTEMPTED [100 marks.]

*1. Draw a design for the decoration of a Clock-case of the shape and to the dimensions shown on the diagram. The lay-out of the whole design should be indicated and at least *half* completed in colour.

*2. Draw a design for a Showcard or Poster, 8 inches by 10 inches (vertical), using as the principal motif of the design two or more of the objects illustrated on the diagram.

Additional features may be added if considered appropriate. Simple "one-stroke" lettering may be used to indicate the title or announcement. Complete as much of the design as possible in colour.

3. Make a design for a Tray-cloth 12 inches by 14 inches. Scale : $\frac{1}{2}$ full-size.

Any style of ornament may be used. The design should be suitable for Embroidery, Leathercraft, or Stencilling, and should include a Monogram.

4. Draw a design for the lid of a rectangular box to contain *one* of the following :—

- (a) Electric Light Bulbs, or
- (b) Toilet Soap, or
- (c) Coloured Chalks.

The lid is to be 8 inches by 5 inches.

Complete as much of the design as possible in colour.

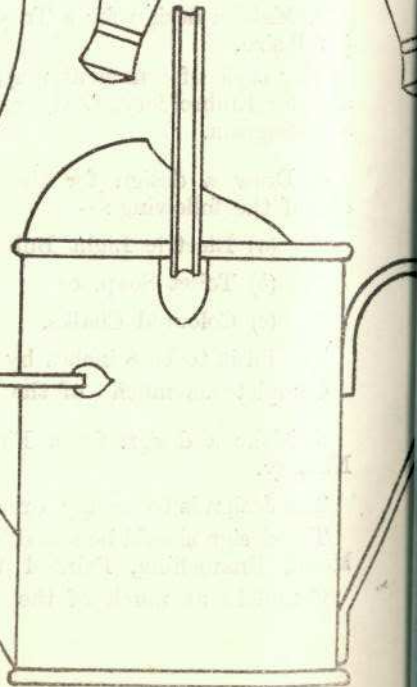
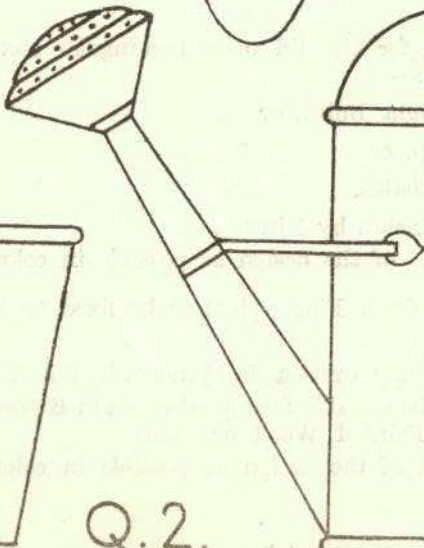
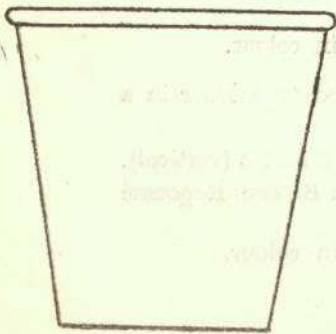
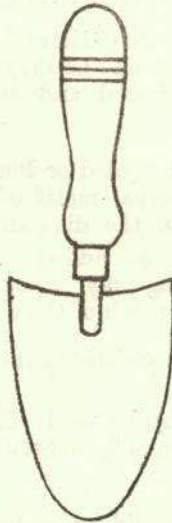
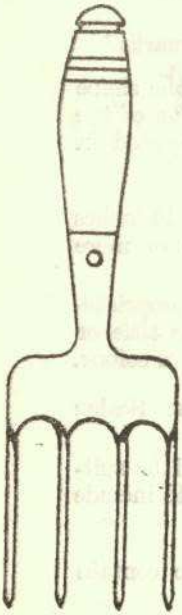
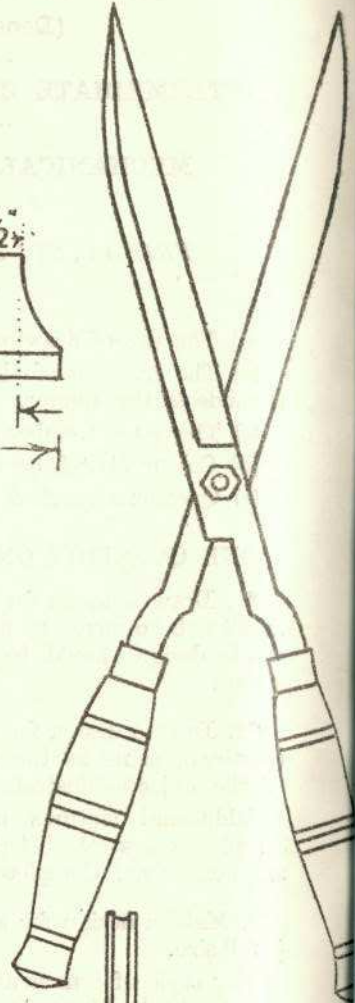
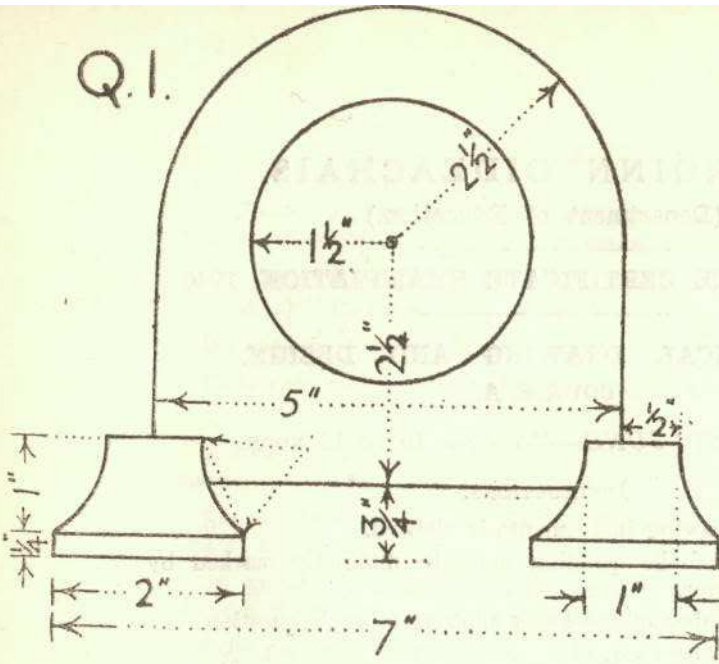
5. Make a design for a Finger-plate to be fixed to a Door in a Nursery.

The design is to occupy a rectangle $7\frac{1}{2}$ inches by 3 inches (vertical).

The design should be suitable for reproduction in Bronze, Repoussé Metal, Enamelling, Painted Wood or Glass.

Complete as much of the design as possible in colour.

Q.1.



Q.2.