

AN ROINN OIDEACHAIS
(Department of Education).

BRAINSE AN MHEÁN-OIDEACHAIS
(Secondary Education Branch).

INTERMEDIATE CERTIFICATE EXAMINATION, 1933.

ELEMENTARY MATHEMATICS (Arithmetic).
FOR GIRLS ONLY.

MONDAY, 19th JUNE.—MORNING, 10 A.M TO 12 NOON.

Six questions may be answered.

All questions carry equal marks.

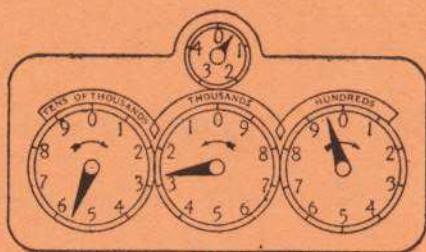
Mathematical Tables may be obtained from the Superintendent.

1. Find the total cost of the following items :—
 - (i) $2\frac{1}{2}$ dozen grape fruit at $4\frac{1}{2}$ d. each.
 - (ii) 7 dozen eggs at 1s. 2d. per dozen.
 - (iii) 5 tins peaches at $11\frac{1}{2}$ d. per tin.
 - (iv) $1\frac{1}{2}$ pints milk daily for the month of May at 6d. per quart.
2. Find the cost of $67\frac{1}{2}$ tons of coal at £1 18s. 6d. per ton. If 1s. in the £1 discount is allowed, what is the amount payable ?
3. What length of cretonne will be required for 13 pairs of window curtains each 8 feet 6 inches long, allowing 3 inches extra for each curtain for hemming ? What will the cretonne cost at 1s. 11d. per yard ?
4. In a town of 21,546 inhabitants, $\frac{5}{13}$ are men, $\frac{3}{7}$ women and $\frac{3}{14}$ boys. How many girls are there ?
5. Find to three decimal places the square root of 128.046.
6. In cooking a joint of beef 15 minutes is allowed for each lb. and 15 minutes over. Draw a graph to show the time required to cook joints weighing from one to 15 lbs. Read from your graph the time required for a joint of $8\frac{3}{4}$ lbs.

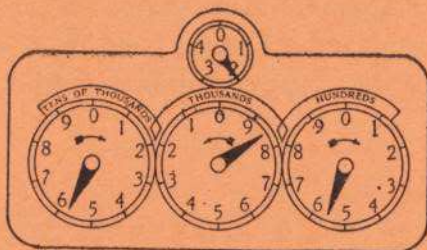
7. Find in sq. cms. to 2 decimal places the area of a circle of radius 9.45 cms.

Express the result also in sq. inches with corresponding accuracy.

8. The diagrams shown below indicate the readings in cubic feet of a gas-meter on 1st July and 30th September. If the price of gas is 1s. per therm, what is the gas bill for the quarter?



1st July.



30th September.

(NOTE.—1,000 cubic feet is equivalent to $4\frac{2}{3}$ therms.)

9. Out of a sum of £10,000, the following amounts are paid :—

£	s.	d.
568	17	6
89	13	4
632	6	9
217	8	10
446	19	2
94	15	6
180	4	6
986	6	2
733	8	3

Find what percentage of the sum is left.